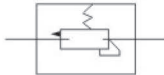




Symbol



Pull the valves work rotating, rotating the knob can be compressed air pressure to the set pressure, and can use pulsation tend to balance, turning the knob presses can lock.

Specification

Model	SFR-200	SFR-300	SFR-400
Port size	G1/4"	G3/8"	G1/2"
Pressure gauge diameter	G1/8"	G1/8"	G1/8"
Ensured pressure resistance	1.5Mpa		
Maximum working pressure	1.0Mpa		
Environment and fluid temperature	5 ~ 60°C		
Protection cover	Yes		

Overall Dimension

