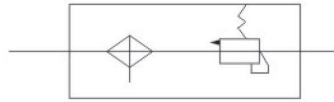




Symbol



This product set filter, decompression, oil mist in a body, has the advantages of compact structure, large flow, easy installation and stable output pressure. Element with a pressure gauge, a mounting bracket, oil mist device has not stopped gas function, are provided with a cup of protective cover, safe and reliable, beautiful appearance.

Ordering code

SFC

Type
Filter Regulator

□□

Specifications
200: G1/4"
300: G3/8"
400: G1/2"

SFC Series Two Elements

Specification

Model	SFC-200	SFC-300	SFC-400
Port size	G1/4"	G3/8"	G1/2"
Pressure gauge diameter	G1/8"	G1/8"	G1/8"
Ensured pressure resistance		1.5Mpa	
Maximum working pressure		1.0Mpa	
Environment and fluid temperature		5~60°C	
Protection cover		有	

Overall Dimension

