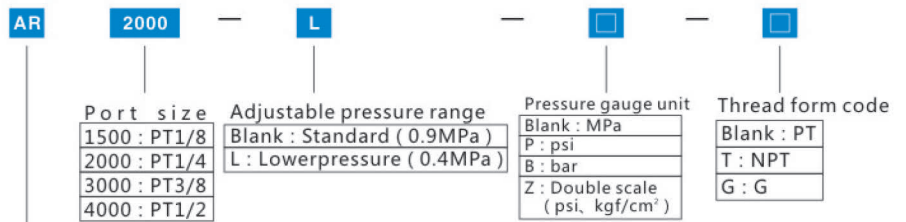




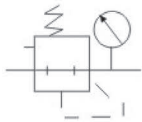
## ■ Specification

Model	AR1500	AR2000	BR2000	BR3000	BR4000
Working Medium	Air				
Port size	PT1/8	PT1/4	PT1/4	PT3/8	PT1/2
Working pressure range	0.05~0.9MPa ( 7~130Psi )				
Ensured pressure resistance	1.5MPa ( 215Psi )				
Operating temperature range	-20~70°C				
Weight	200g		230g		

## ■ Ordering code



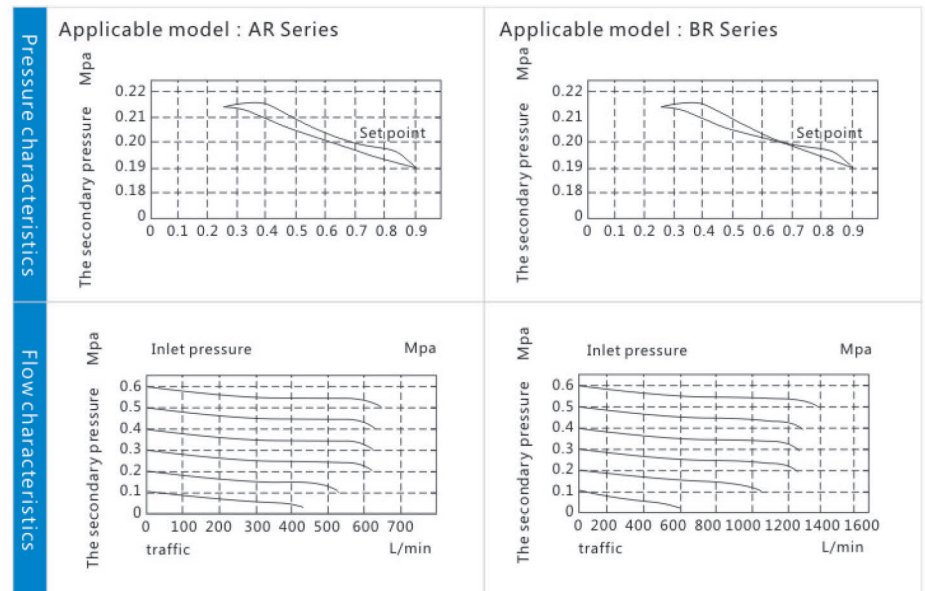
## ■ Symbol



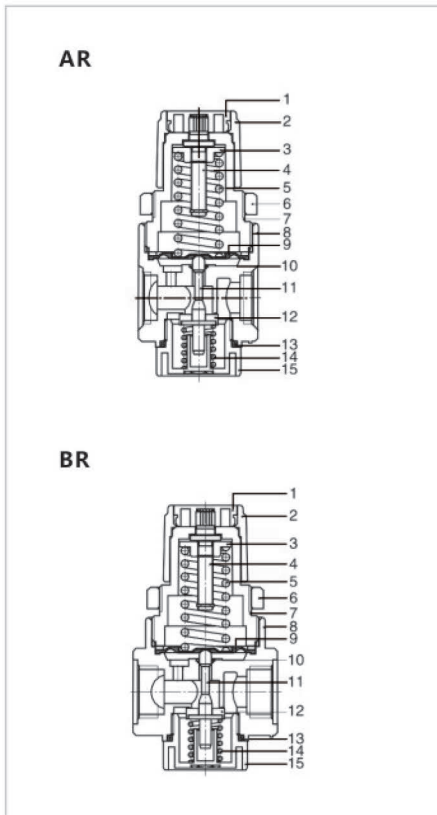
## ■ Product Performance

- 1, light and compact structure, convenient installation and use;
- 2, press into the self-locking mechanism, which can prevent the setting pressure from outside interference produced changes;
- 3, in addition to the standard form, otherwise low type choice (maximum adjustable pressure 0.4MPa).

## ■ Pressure and flow characteristics



### Inner structure



### Parts material

No.	Item	Material
1	Push button	POM
2	Adjusting button	POM
3	Adjusting nut	Steel
4	Adjusting pillar	Steel
5	Adjusting spring	SWC
6	Fixed ring	POM
7	Adjusting seat	POM
8	Body	Aluminum alloy
9	Diaphragm	SUS304& rubber
10	Needle O-ring	NBR
11	Balance needle	ROM
12	Needle gasket	Aluminum alloy & rubber
13	Cap O-ring	NBR
14	Return spring	Stainless steel
15	Regulator cap	POM

### Overall Dimension

